

INSTALLATION CONTROL CRUISE FORD FIESTA MK8

OEM PARTS NEEDED: steering Wheel switch left,(botonera izquierda volante)

Ref OEM: 2127976 OEM number of piece: H1BT-9E740-AB (*very important*)

FORSCAN CABLE: NO OEM (*important ford and switch ms-can/hs-can*).



IT COST ME: 56.81€+IVA -10% DISCOUNT (*España*)

First we must disconnect the negative pole of the battery.

We must remove the piece of plastic and cloth from the steering Wheel.



Yellow circles: that part is attached to the kilometer count, we must pretend those two tabs underneath and pull up, it comes out quite well pushing up.



To remove it from the other end, we must press the tab inwards (**blue circle**), while using a thin flat screwdriver we pry (**insert green rectangle**).

Once the previous part is removed, we must put the steering wheel in this position, to have access to the holes in the rear.





This is how it would look from the back, we will have to introduce a flat and thin screwdriver through those holes(**circle red**) to lift the clip inside, while we pull the airbag out of the same side, when we hear a light click, is that already removed, change the steering wheel and do the same procedure. Once the airbag is loose, we must release the cables, one in the central part of the airbag and two in some outer rings, one black and the other **violet**, remember where they are going.



it would look like this.



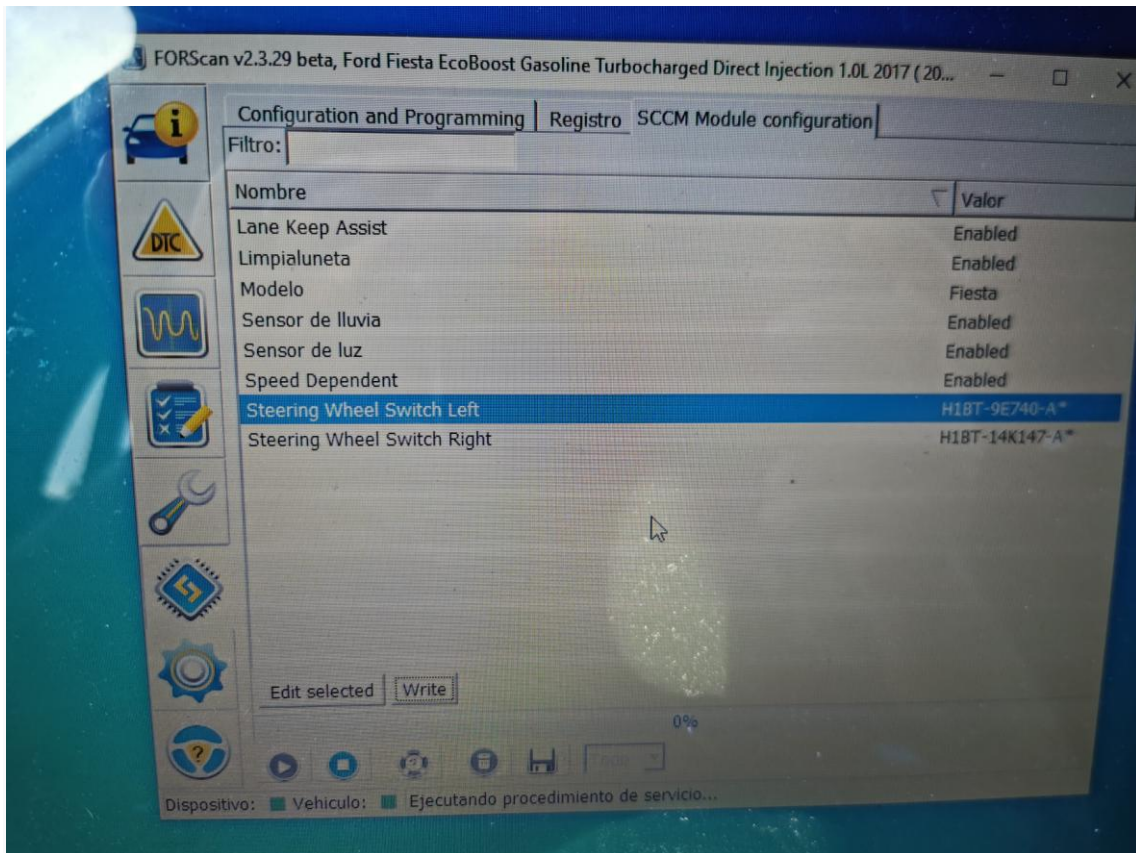
Now it is time to remove the plastic that surrounds the central part of the steering wheel. It is simply removed by pulling out carefully, but strong because the tabs are very tight in the inner rubber.



Once that plastic is released, we will have access to the back of the keypad. We must release 2 small torx screws, number 5 I think I remember. We put the other keypad and do all the steps in reverse.

Once the mechanical part is finished, we will reconnect the battery, and proceed to connect the forscan cable. We must activate the cruise control options in the BdyCM sections, and APIM I think remember.

Finally and most importantly, we go to this section.



And activate the number of keypads that we have set **H1BT-9E740-A***

