



Haz93's guide to fit Submarine Lighting

This guide is for the following Interior Light Unit only (May work on other style unit too)



1. The first step, The Components.

Decide what colour LED's you want. The original ST ones are RED but others may choose BLUE etc...



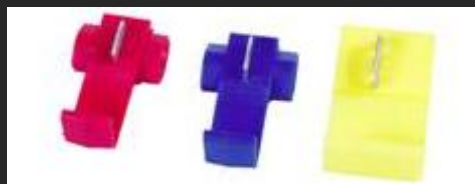
Whatever colour you choose, you must make sure they are 12V LED's.

These are the ones I purchased

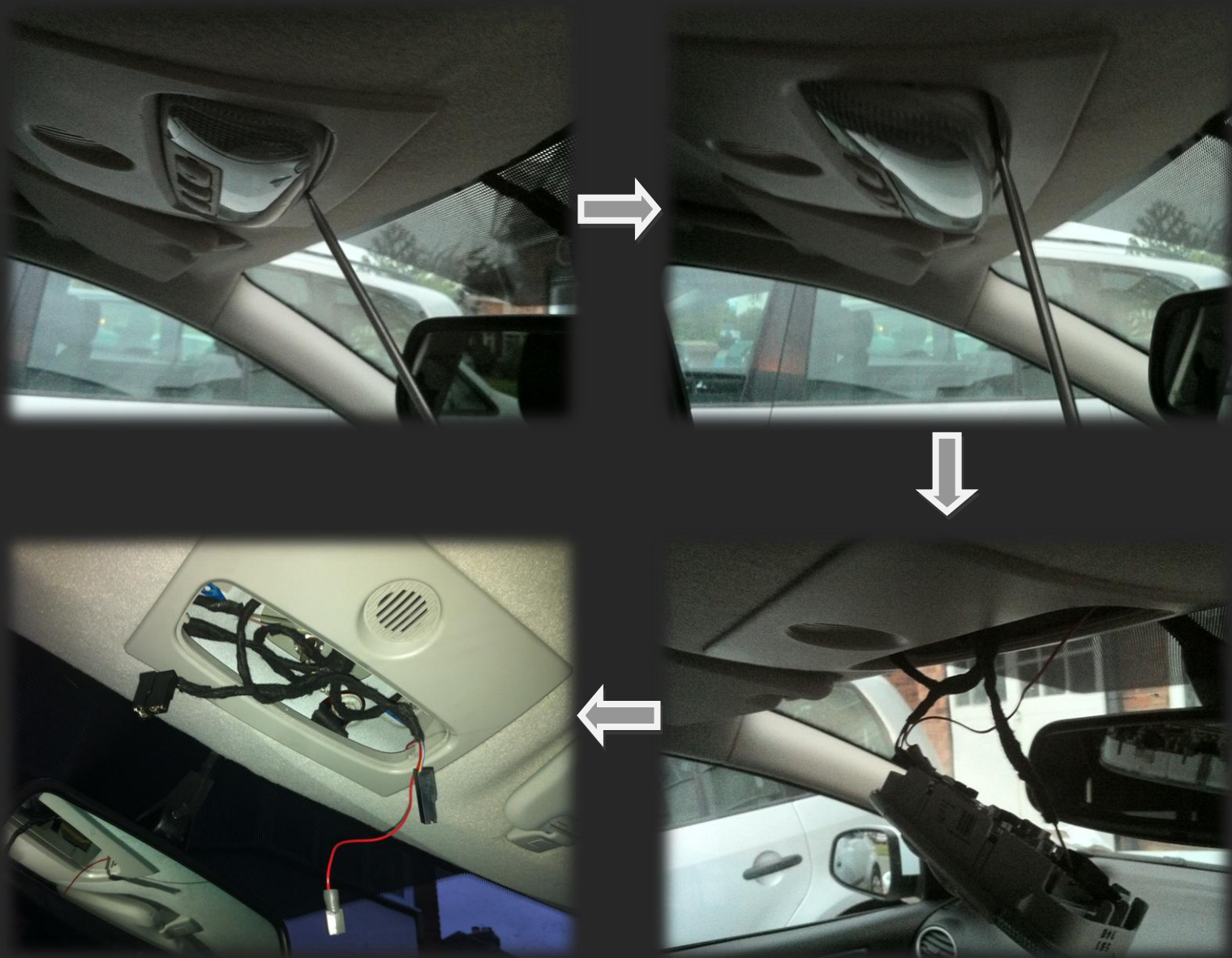
<http://www.maplin.co.uk/12v-3mm-leds-35738>

You will also need some wire suitable for 20Ma that the LED's need. I managed to find some in my garage that would be suitable so no link

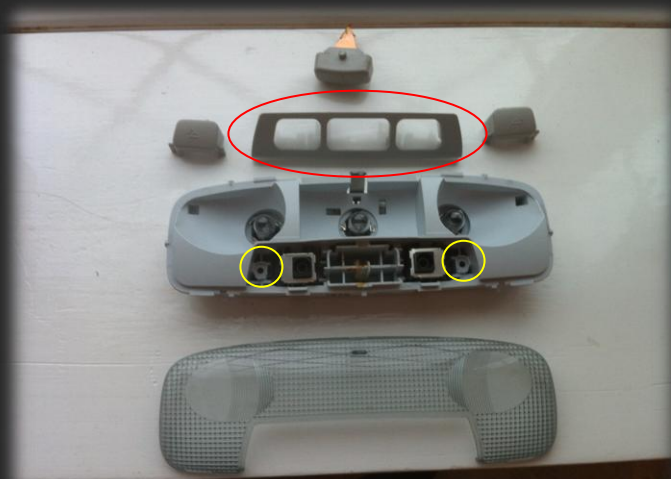
Also a small Spade connector to fit over the pin on the circuit and a snap lock cable connector



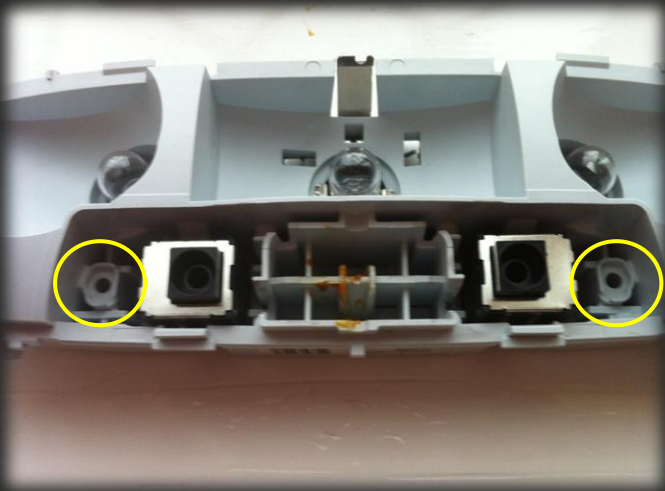
2. Now you need to remove the unit from the car using a flat head screwdriver to lever the metal clip



3. Disassemble the unit into pieces, then drill two 3.5 – 4 mm holes in the part circled red to line up with the holes circled yellow



These are the holes where the LED's will fit as shown below

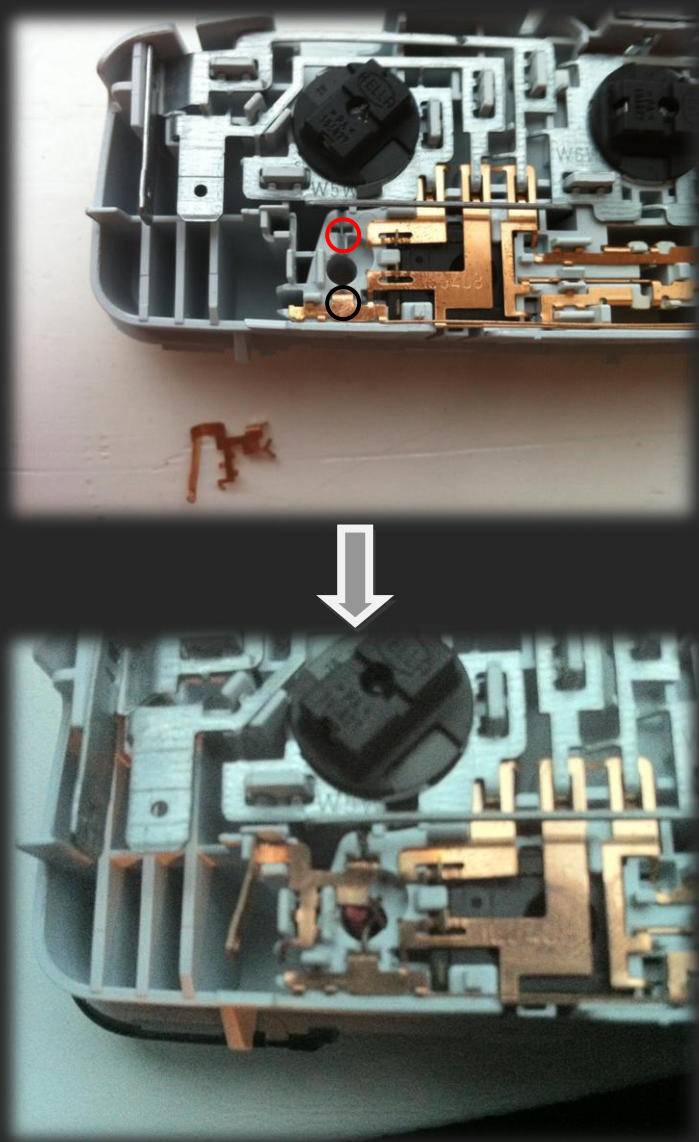


4. The LED's must be placed one in each hole, from the side shown

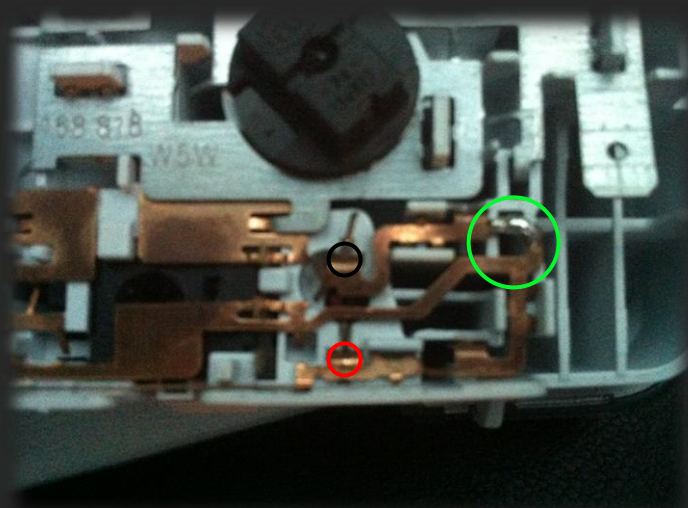


The two connectors on the LED's must have some protection to stop the two touching when passing through the holes circled Yellow above

5. To connect the LED's into the circuit, you must remove the sections of copper around each hole as shown below. The longer end to the LED (positive) must be connected to the side marked RED and the shorter (negative) to the side marked BLACK.



To attach the copper sections to the LED, apply pressure to the copper after lining up the V shaped section over the LED.



6. Now to complete the circuit you need to solder the section shown above circled in Green to attach the Negative feed.
7. Next comes the Positive feed wire. This will run from the Headlight switch to the LED circuit on the Interior light.



Undo and remove screw



Pull away the plastic trim

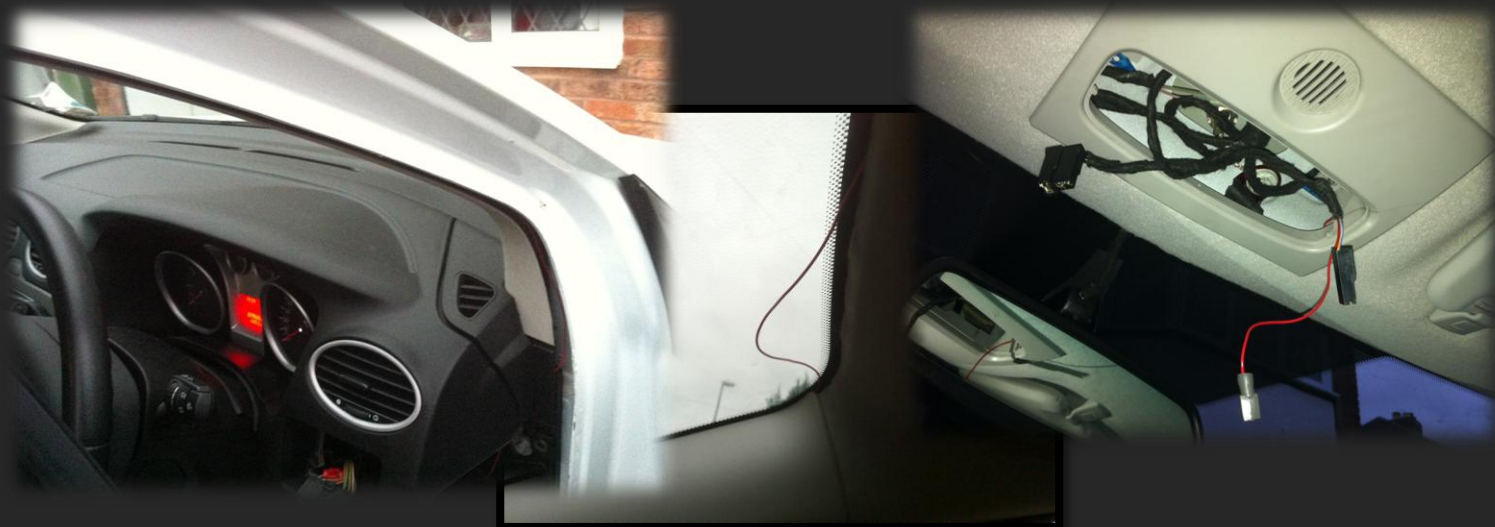


Remove headlight switch



Attach your wire to the Blue and Orange wire on the left of the connector

Re fit the headlight switch then remove the door seal to run the cable up the inside of the A pillar and across the windscreen to the Light.



You should now connect the spade connector end of the wire to the pin on the light unit as shown, then now the LED's should come on with the Sidelights and Headlights, also works with Auto lights.



REMEMBER : reconnect all plugs you have removed to complete this.

Also make sure your door seal is put back in place securely.

I shall not be held responsible for any damage you inflict.

Thanks for using my guide. Ask for permission to post elsewhere

